



# MAPLE PARK

MEMORIAL BROCHURE



# CONTENTS

Garden of Remembrance . . . . .	3
Memorials	
Frieze Slate Plaque . . . . .	4
Family Garden . . . . .	5
Yorkshire Stone Boulder . . . . .	6
Columbarian Niche . . . . .	7
Digital Book of Remembrance . . . .	8
Children's Memorial . . . . .	9
Scatter Garden . . . . .	10
Map and Contacts . . . . .	11

# GARDEN OF REMEMBRANCE

At Maple Park we offer a beautiful memorial garden and grounds which allow for quiet contemplation alongside a variety of wildlife. Visitors can enjoy the memorial garden and woodland walk throughout the changing seasons, and we hope the space created will provide families with comfort.

For some families, choosing a lasting memorial is a way to remember and grieve. We understand how important it is to find the right memorial and our small, friendly team are here to help you create a tribute that will mark and celebrate the life you shared.

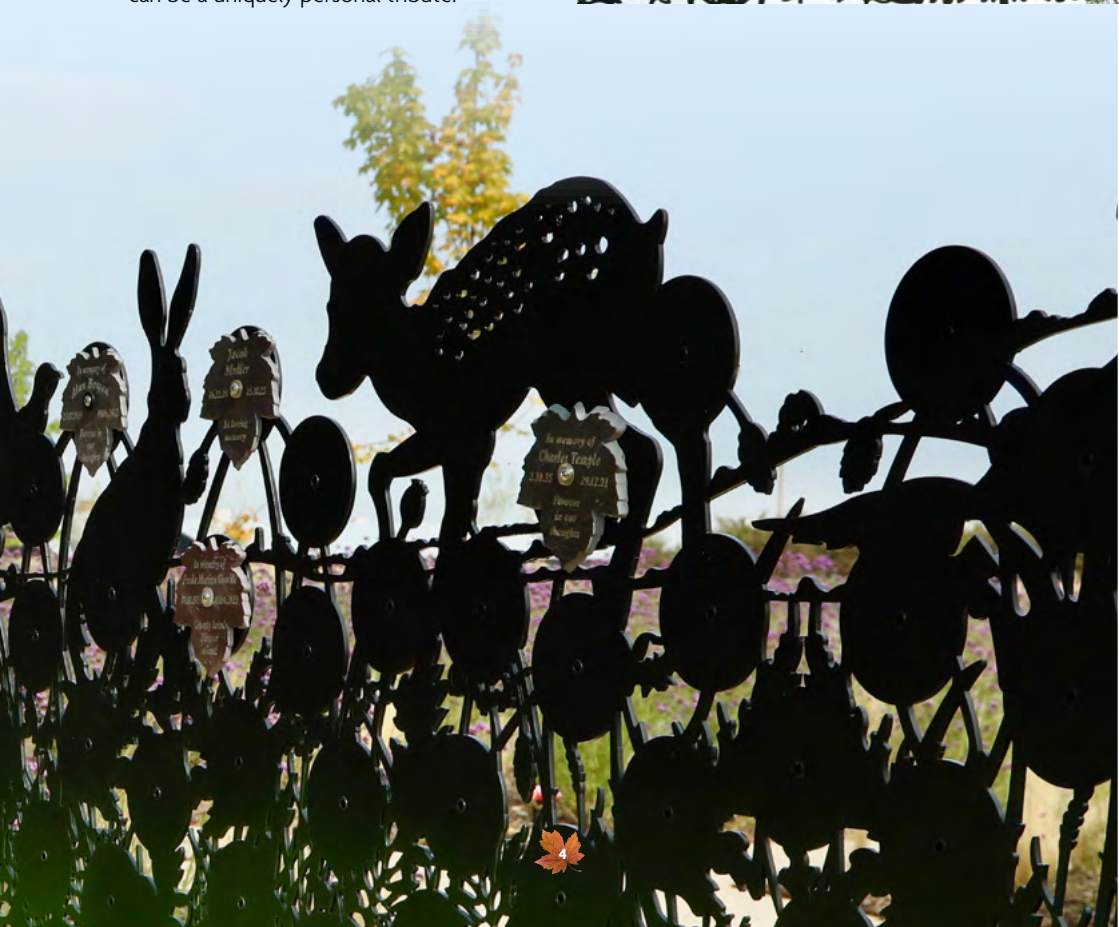
We work closely with suppliers and engravers to provide unique, locally sourced memorials that are reflective of the community we serve.



# MEMORIALS

## FRIEZE SLATE PLAQUE

This exclusive memorial has been thoughtfully designed by the team at Maple Park and created in conjunction with the talent of a Hull based memorial company. This memorial has been created to reflect the local community. There are a variety of themed friezes to choose from for the location of your reclaimed slate plaque, such as the White Horse, tractor and wildlife, meaning this memorial can be a uniquely personal tribute.







## FAMILY GARDEN

Family Gardens are individually designed private areas within the memorial garden, hand created by our team, offering a spacious plot that encompasses a Maple Tree and a Yorkshire Stone Boulder. With up to four sets of loose interred ashes allowed within the private garden, this memorial can be a tribute for generations and a special space for reflection.





## YORKSHIRE STONE BOULDER

The Yorkshire Stone Boulders are sourced from a local quarry, each unique in size, shape, and colour. They sit naturally in the landscape of the memorial garden.

This memorial is a natural, lasting way to remember a loved one.



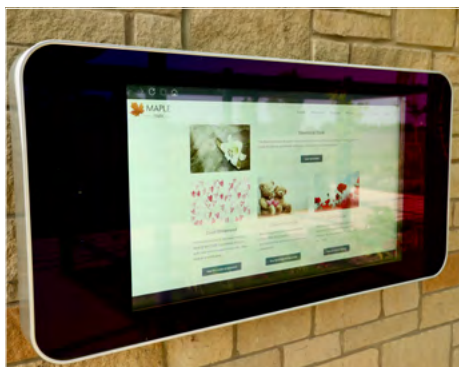
## COLUMBARIUM NICHE

This elegant marble fronted memorial offers the above ground interment of up to two sets of cremated remains, providing a place for family and friends to visit and remember your loved ones for years to come.



## DIGITAL BOOK OF REMEMBRANCE

The digital book of remembrance provides families with an online memorial that can be personalised with emblems, photos, and tribute pages. The digital book of remembrance memorials can be viewed any time by loved ones.







# CHILDREN'S MEMORIAL GARDEN/MEMORIAL

## CHILDREN'S FRIEZE SLATE PLAQUE

Our private children's memorial garden is centred around Reg's Garden. Reg's garden is a concept considerably designed to provide a comforting memorial for families who have lost young children. The brightly coloured flower plaques allow families to leave a poignant tribute to their child.



# SCATTER GARDEN

For many, knowing their loved one's resting place is close by, is enough comfort as they sit quietly in the gardens. We have created a communal space where ashes can be scattered in a natural setting, these scatterings can be done with or without family present as per your wishes.

At Maple Park, the only areas designated for the strewing of ashes are the scatter gardens. It is not permitted to scatter ashes elsewhere. However, as detailed in our brochure, the family gardens and stone planters include an entitlement to scatter ashes within the memorial.



# MAP AND CONTACT



- ① Car park
- ② Welcome area and Service hall
- ③ Maple Park cafe and Wake facility
- ④ Garden of Remembrance





Maple Park, Skipton Bridge, Thirsk, YO7 4SA

Email: [maplepark.ham@northyorks.gov.uk](mailto:maplepark.ham@northyorks.gov.uk) Tel: 01845 813 112

